

# JVC

## SCHEMATIC DIAGRAMS

### COMPACT COMPONENT SYSTEM

## MX-J550R

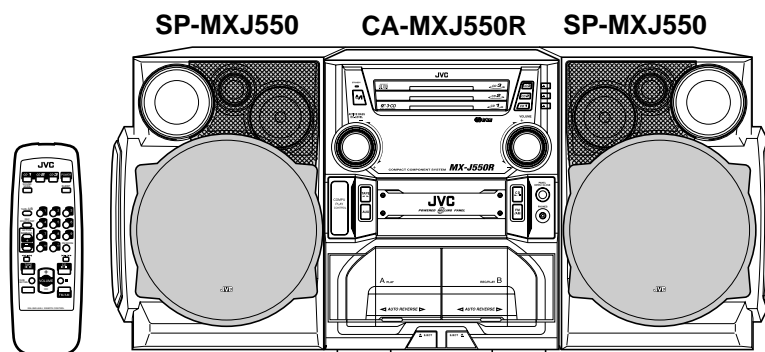
### Supplement

**Area Suffix**

EE --- Russian Federation

This model is EE version that is added to the preceding model, the MX-J550R. Therefore the service manual for this model is consisting of Standard schematic diagrams(Power trans./Tuner/Polar), Printed circuit board(Polar) and Parts list(except the mechanism part) only. For others, please refer to the service manual for MX-J550R/MX-J552R(issue No.20805).

\*Please refer to "CD-ROM No.SML200007 (20805Bpar)" for the parts list section.



COMPACT  
**disc**  
DIGITAL AUDIO



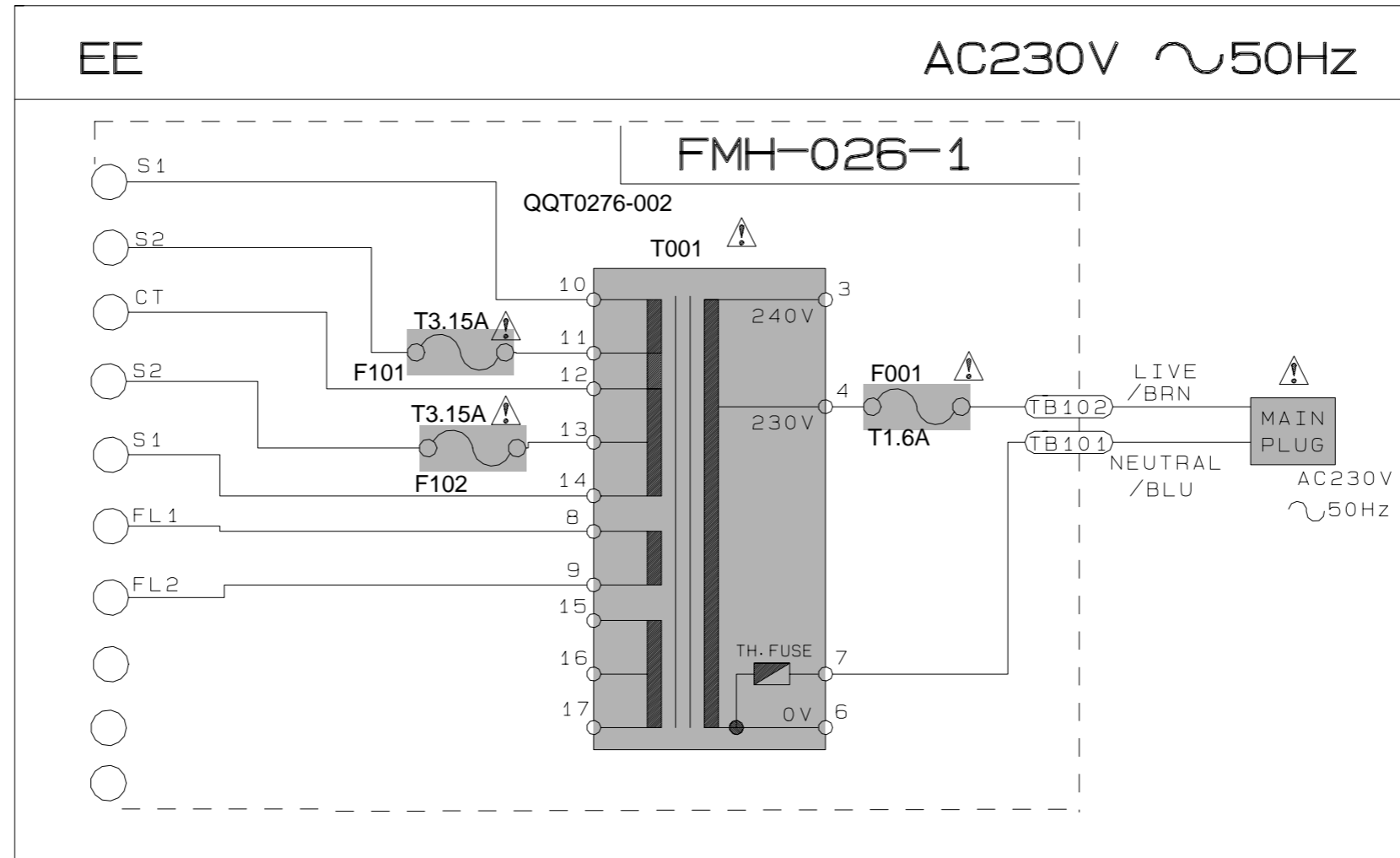
### Contents

Standard schematic diagrams	-----	1
Printed circuit board	-----	4

# Standard schematic diagrams

■ Power transformer section

5  
4  
3  
2  
1



**EXPLANATION OF OVERALL OF SCHEMA.**  
**MODEL** MX-J500/CA-MXJ500/MX-J506/MX-J550R/CA-MXJ550R/CA-MXJ552R

**VERSION CODES**  
 EE :RUSSIA

■ ⚠ Parts are safety assurance parts.  
 When replacing those parts make  
 sure to use the specified one.

■ Tuner section

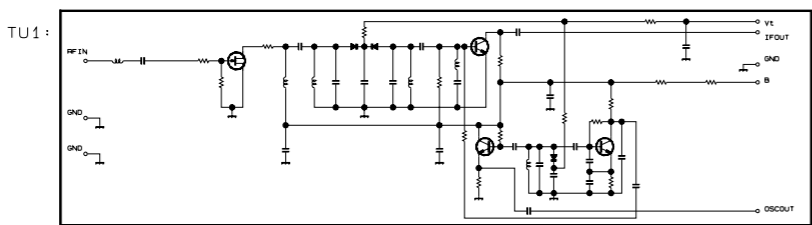
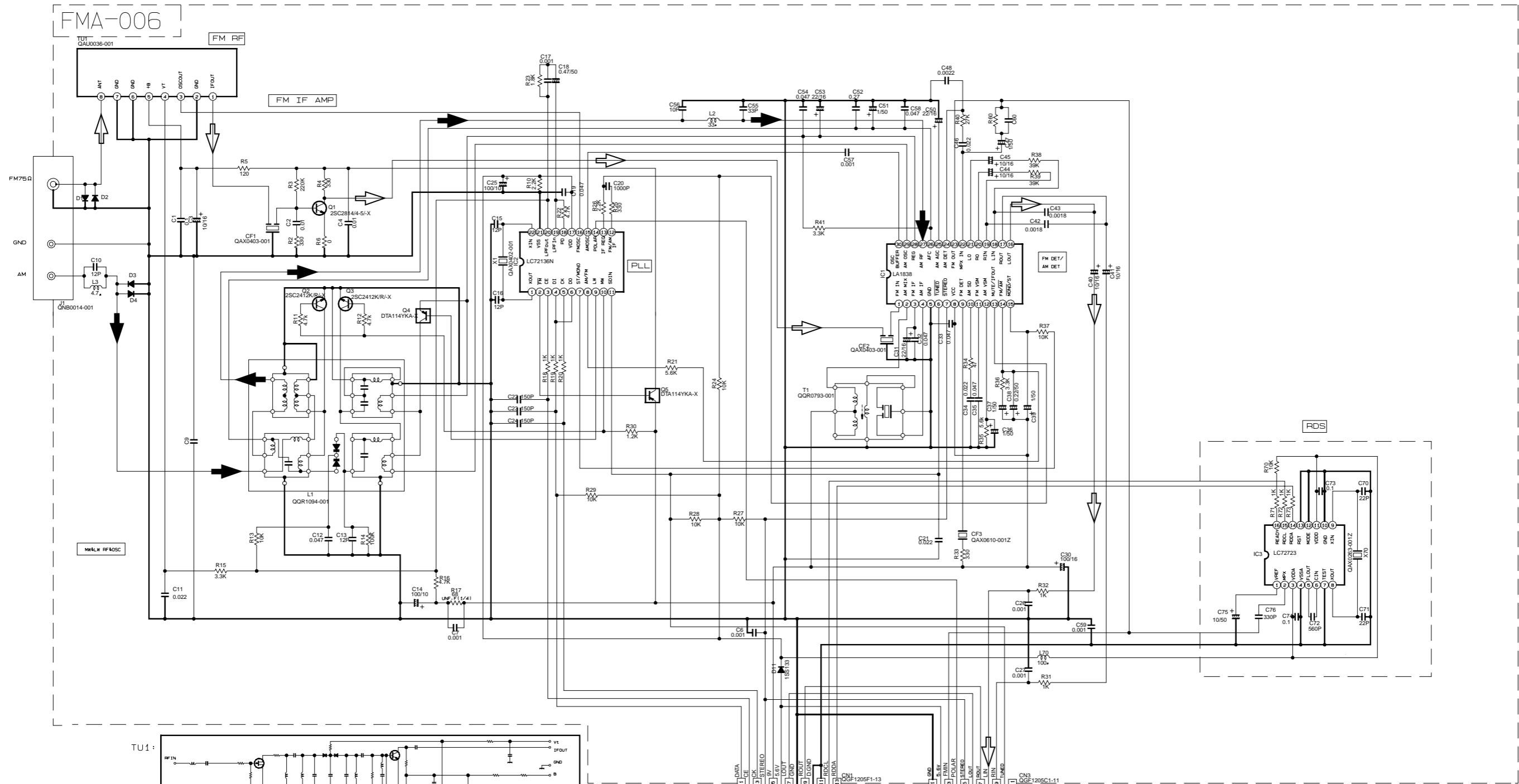
5

4

3

2

1



From CN865 of FMB-022-01 To CN100 of FMA-007

CONDITION	PIN NO.	1	2	3	4	5	6	7	8	9	10	11	12	13	14	15	16	17	18	19	20	21	22	23	24	25	26	27	28	29	30
IC1	FM NO SIGNAL	3.6	8.9	3.6	3.6	0	5.0	5.0	8.9	8.9	1.3	0.1	0	0.9	7.8	7.8	4.3	4.3	4.3	4.3	3.4	3.4	2.8	3.4	0	0	3.5	3.5	3.6	3.6	2.7
IC1	FM 60dB STEREO	3.6	8.9	3.6	3.6	0	5.0	5.0	8.9	8.9	1.3	4.3	0	0.9	7.8	7.8	4.3	4.3	4.3	4.3	3.4	3.4	2.8	3.4	0	0	3.6	3.6	3.6	3.6	2.7
IC1	AM NO SIGNAL	3.5	9.0	3.5	3.5	0	5.0	5.1	9.0	2.6	1.3	0	0	0.9	4.7	5.5	4.3	4.3	4.3	3.3	3.2	2.8	ust	0.7	0.7	3.6	3.6	3.6	3.6	2.1	
IC2	FM NO SIGNAL	2.5	0	0	5.0	4.9	5.0	7.9	7.8	3.6	6.1	5.1	0	0	0	0	2.5	5.1	0.9	0.9	3.8	0	2.3								

Tr NO.	Q1	Q5
PIN NO.	E C B	E C B
FM 87.5MHz NO SIGNAL	0 7.1 0.85	8.9 B.8 0
AM 522kHz NO SIGNAL	0 0 9.0	0 B.9

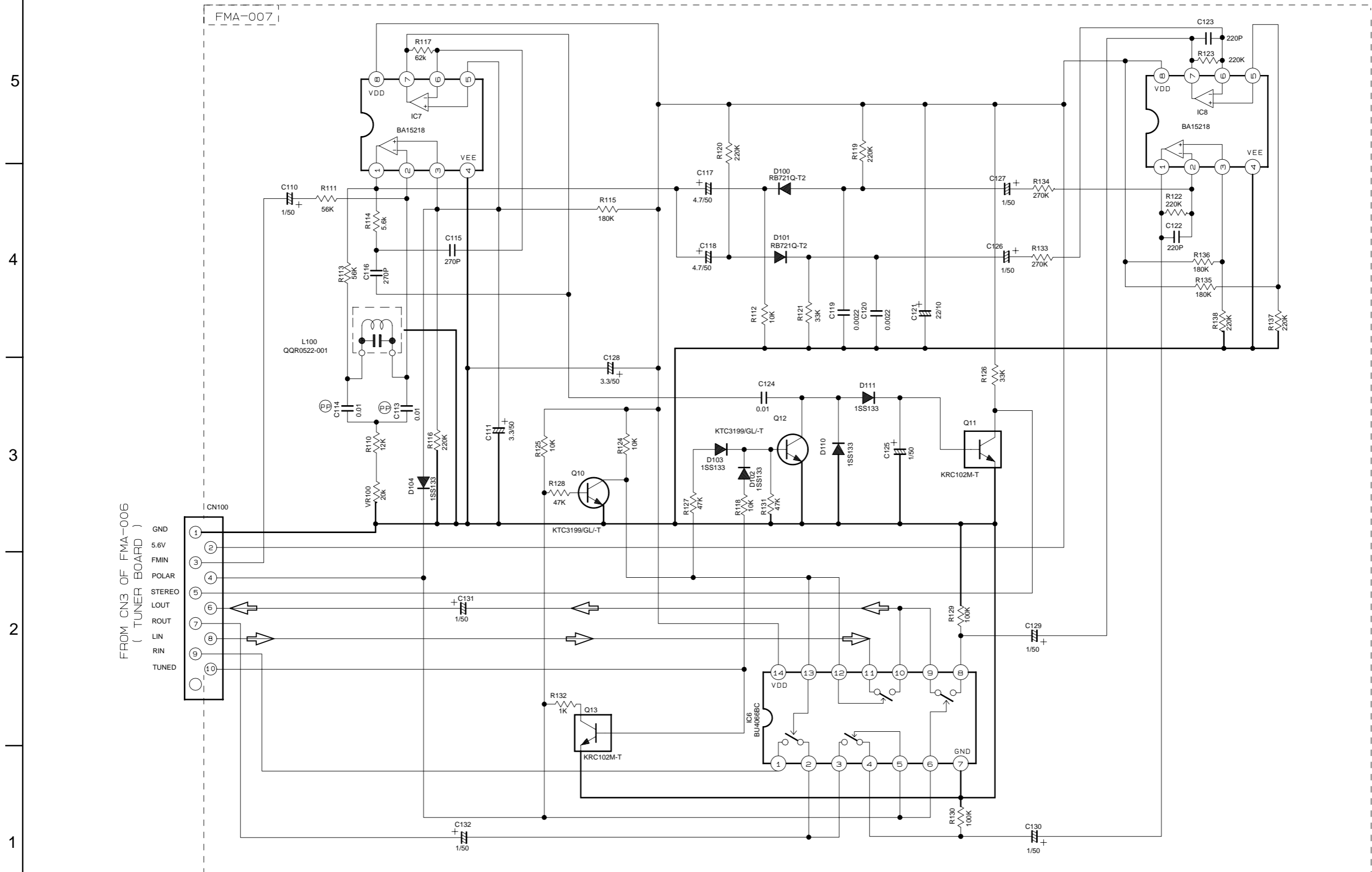
  

Tr NO.	Q2	Q3	Q4
PIN NO.	E C B	E C B	E C B
AM 522kHz NO SIGNAL	0 0 0.7	0 0 0.7	0 3.6 0.7
AM 144kHz NO SIGNAL	0 0 0.3	0 0.3 0.3	3.6 3.6 3.6

FM/TUNER signal  
AM signal

MX-J550R EE

■ POLAR Section



FROM CN3 OF FMA-006  
( TUNER BOARD )

- ① GND
- ② 5.6V
- ③ FMIN
- ④ POLAR
- ⑤ STEREO
- ⑥ LOUT
- ⑦ ROUT
- ⑧ LIN
- ⑨ RIN
- ⑩ TUNED

EE  
MX-J550R

➔ FM/TUNER signal



**JVC**

**VICTOR COMPANY OF JAPAN, LIMITED**

AUDIO & COMMUNICATION BUSINESS DIVISION

PERSONAL & MOBILE NETWORK B.U. 10-1,1Chome,Ohwatari-machi,Maebashi-city,371-8543,Japan